



Watts Grove, London, E3 3RB

Property still available but not booking further viewings
A recently renovated two bedroom apartment strategically located moments from DLR, District, Hammersmith City Underground Stations, and within walking distance from Canary Wharf.
The property boasts a naturally bright living room, a modern separate kitchen, two double bedrooms with plenty of storage space, and a stylish fully tiled bathroom.

Council Tax Band: B

- Recently Refurbished Apartment
- Immaculately Presented
- Moments from Underground Stations
- Contemporary Kitchen
- Stylish Bathroom
- Naturally Bright

Alex & Matteo
ESTATE AGENTS

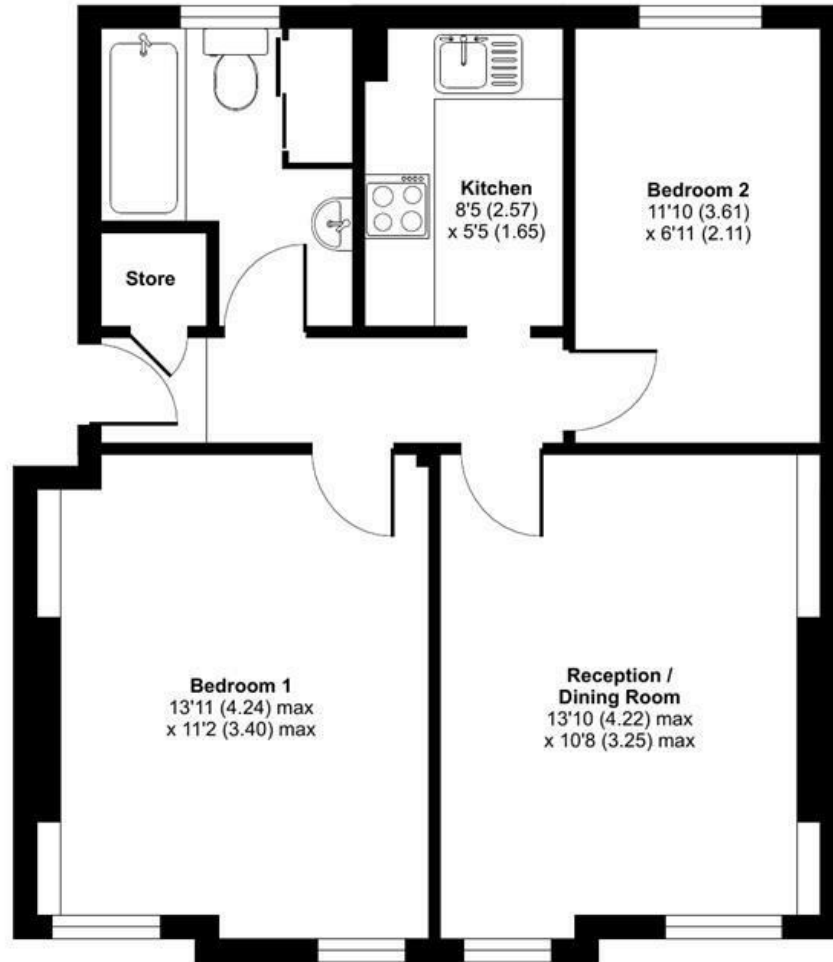
£1,700 Per month



Sumner House, Watts Grove, London, E3

Approximate Area = 548 sq ft / 50.9 sq m

For identification only - Not to scale



SECOND FLOOR



Floor plan produced in accordance with RICS Property Measurement Standards incorporating International Property Measurement Standards (IPMS2 Residential). © nchecon 2022. Produced for Alex & Matteo Estate Agents. REF: 864941

Energy Efficiency Rating		
	Current	Potential
Very energy efficient - lower running costs		
(92 plus) A		
(81-91) B		
(69-80) C	73	80
(55-68) D		
(39-54) E		
(21-38) F		
(1-20) G		
Not energy efficient - higher running costs		
England & Wales	EU Directive 2002/91/EC	